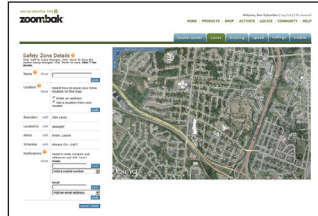


Setting Up Your Safety Zones

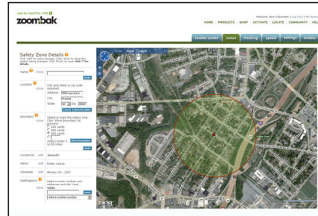
1 Setting Up Your Safety Zones

- Under "My Zones" click on the "create new" button
- Name your safety zone
- Click on the "device location" tab to set up a zone around your Locator's current or last known location, or manually enter an address where you would like to base your zone



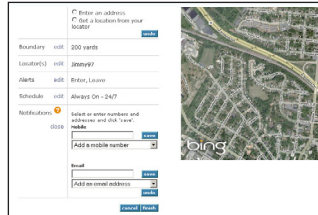
2 Create Your Safety Zone Boundary

- Select a boundary or create a customized boundary for your safety zone
- A safety zone boundary can be set up for a radius as small as 100 yards (1/8 mile) and as large as a 50 miles



3 Create Your Safety Zone Schedules and Alerts

- Select your Locator
- Create a daily or extended schedule for your safety zone and click the "create new" button
- Customize the alerts by selecting the notifications you want to receive (when your Zoombak leaves a zone, enters a zone or both)
- Select how you would like to be notified (email, text message or both), making sure to "add" each option by clicking on the appropriate button
- Click the "finish" button at the bottom right of the screen to save all of your schedules and alert notifications



Universal A-GPS Locator Quick Start Guide

